



More convenience with the new X ledlink's app

With the new X ledlink's app, you can easily and intuitively control and individually configure light.

Design comfort with light - Create your own comfort scenes and save them for individual devices or groups. The comfort scenes are saved on the Bluetooth dimmers and can also be called up across devices at any time.

The new group control allows you to control several dimmers or even individual light channels together in a group.

Up to 14 light groups with any number of dimmers can be created. Individual light channels can be assigned to up to 4 different groups.

Individualise your X ledlink's app - assign your own images to the respective dimmers or devices or call up a group or dimmer directly when starting the programme.

Switch off lights automatically with the timer.

New functions

- Group control
- Timer
- Save & recall light scenes
- New device manager
- Customisable user interface
- Hybrid device control: classic or with gestures



System requirements

devices

X ledlink's is a mobile control software for the MAY Bluetooth dimming module can be installed on all mobile devices with the following operating systems:



- Android (Smartphone oder Tablet)
- Ab Version 5.0 „Lollipop“ (API-Level 21)



- iOS (Smartphone oder Tablet)
- Ab Version iOS 11.0



- Bluetooth LE Version 4.x incl. advertising support



control-module

Bluetooth dimming modules with firmware from version DIM4-0022. Earlier versions can be easily updated via the X ledlink's app. This requires an internet connection on the mobile device.



first program start - connecting devices



Please confirm with "OK" that X ledlink's is allowed to access your Bluetooth connection.

Please ensure that all devices to be paired are not connected to the mains for more than 3 minutes. Start the X ledlink's app and confirm the info window with the "OK" button.

The X ledlink's app searches for paired devices that are within reception range and are listed in the pairing window.

If the information window appears after 15 seconds, there are no devices within range that are ready to be paired or the pairing time window of

3 minutes has been exceeded. Disconnect the dimmer(s) from the mains for approx. 1 minute and press the "OK" button.



first program start - connecting devices



mark the devices you would like to connect with

As soon as you have selected the device, the version of the current firmware is checked.

If a new firmware is available, you will receive a message that the firmware on your radio receiver should or must be updated.

In order to be able to use the new X ledlink's app, your radio receiver requires the firmware version DIM4-0022 or higher.

Now please confirm with "OK" to carry out the update.

Note:

An Internet connection is required to check and carry out the firmware update.



first program start - connecting devices



If you now confirm the following note that you must not disconnect your radio receiver from the mains during the update, the update will be carried out.

from the mains during the update, the update will be carried out.

After the update has been successfully carried out, confirm the message window with "OK".

Note:

The unit must not be disconnected from the mains while the firmware update is being carried out, as this can lead to a defect of the unit in the worst case.



Android users should restart their mobile device once before performing the firmware update.



first program start - control devices



After the device to be paired has been marked and, if necessary, the firmware update has been carried out, please close the window by clicking on "Close".

The radio receiver is now displayed in the device list and is ready for control.

To access the control menu, please click on the respective radio receiver.



first program strart - control devices

The "Control menu radio receiver" user interface

overview devices

enter the overview for all saved and connected devices

customizing menu

rename the parasols / groups; add personal settings and others

dimming control

control from 0 - 100% brightness

setting & saving your light scenarios

here you can save your light scenarios

call your saved light scenarios

access to your individual scnearios

device-timer

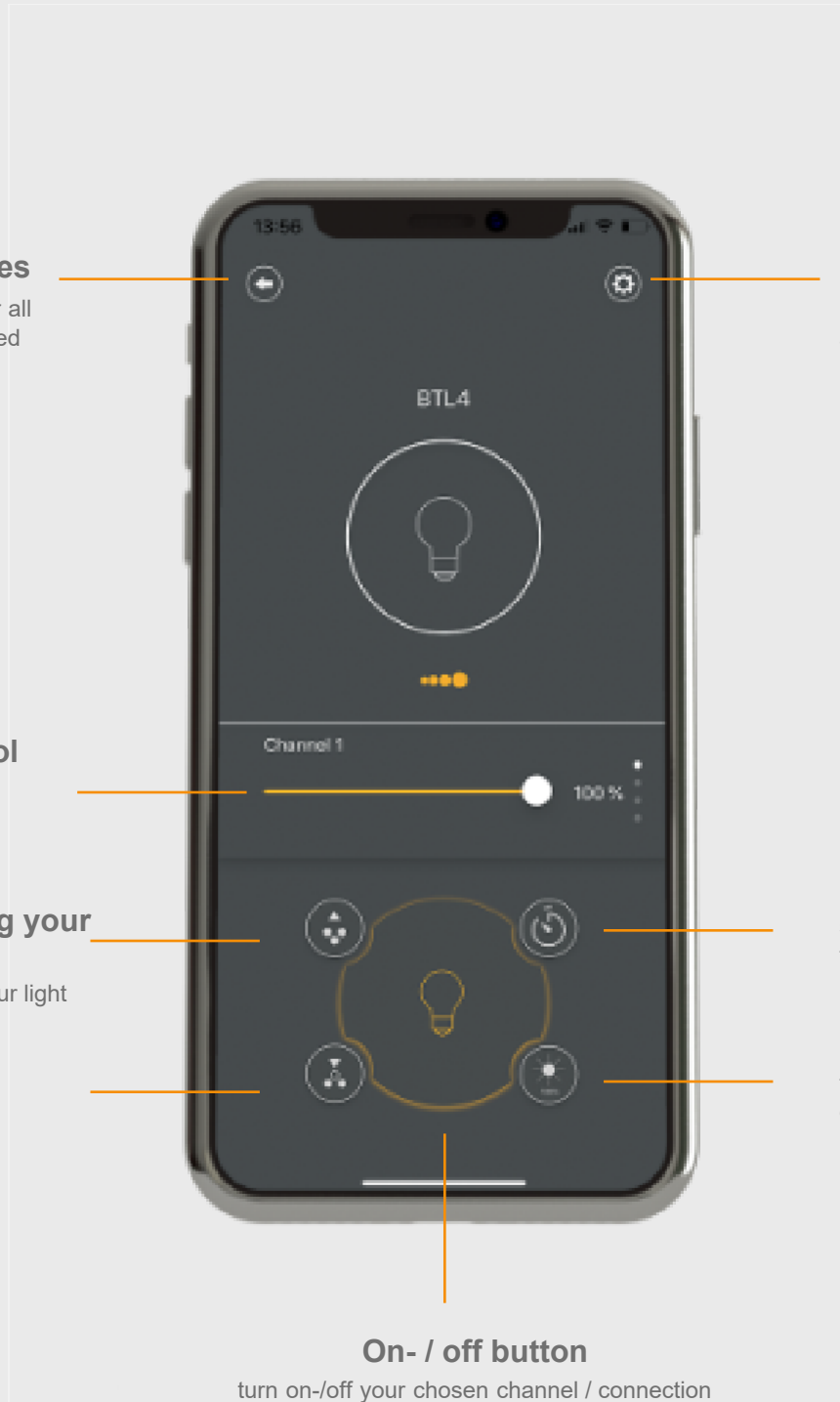
set the desired tuning off time

100% brightness

turns all connected devices to 100% brightness

On- / off button

turn on-/off your chosen channel / connection





additonal advice for Samsung user

Known problems with Samsung smartphones and Android 10:

On some Samsung devices with Android version 10, the firmware update routine cannot be performed due to missing advertisement information.

The firmware update is aborted with the error message "GATT ERROR".

This problem can be solved with the firmware DIM4-0022. However, an update cannot be performed by the affected unit.

We recommend updating the firmware using the following steps:

- a Samsung device with Android version lower than 10
- another mobile device with Android version 5.0 or higher
- a mobile device with IOS 12.0 or higher

After the successful update, the affected unit can be used without restrictions.

Future firmware updates can then also be carried out without any problems.

If no suitable device is available on site, the radio receiver can be sent in for the firmware update.

Please contact your customer service for this.